



US Army Corps of Engineers®

NAVIGATION AND ECOSYSTEM SUSTAINABILITY PROGRAM (NESP)

ST. PAUL DISTRICT- ROCK ISLAND DISTRICT - ST. LOUIS DISTRICT

WACOUTA BAY

PROJECT SUMMARY

Wacouta Bay is located at the head of Lake Pepin in Pool 4 of the Upper Mississippi River. The study area spans the entirety of Wacouta Bay, located on the right descending side of the channel, approximate river miles 784-786. Potential project features are all below the ordinary high water mark.

Concerns over habitat deficiencies in Wacouta Bay. Most resulting from sedimentation and turbidity, include: reduced aquatic and terrestrial habitat diversity and quality, lack of aquatic vegetation, lack of protected wetlands, and reduced abundance of fish and wildlife. Deep protected aquatic habitat for centrarchid fish and associated species is lacking in the backwaters and shallow open water areas of Upper Lake Pepin.

The primary purpose of the Wacouta Bay project is to improve and increase the health and diversity of the wetland, river and backwater, and floodplain forest habitat.

OBJECTIVES



1 Increase the diversity and acreage of aquatic vegetation



2 Increase the health and quantity of floodplain forest



3 Improve the quality of habitat for riverine and backwater fish species



4 Increase the quantity and quality of wetland habitat



5 Protect existing shoreline habitat and increase the linear feet of sheltered bank and associated littoral habitat

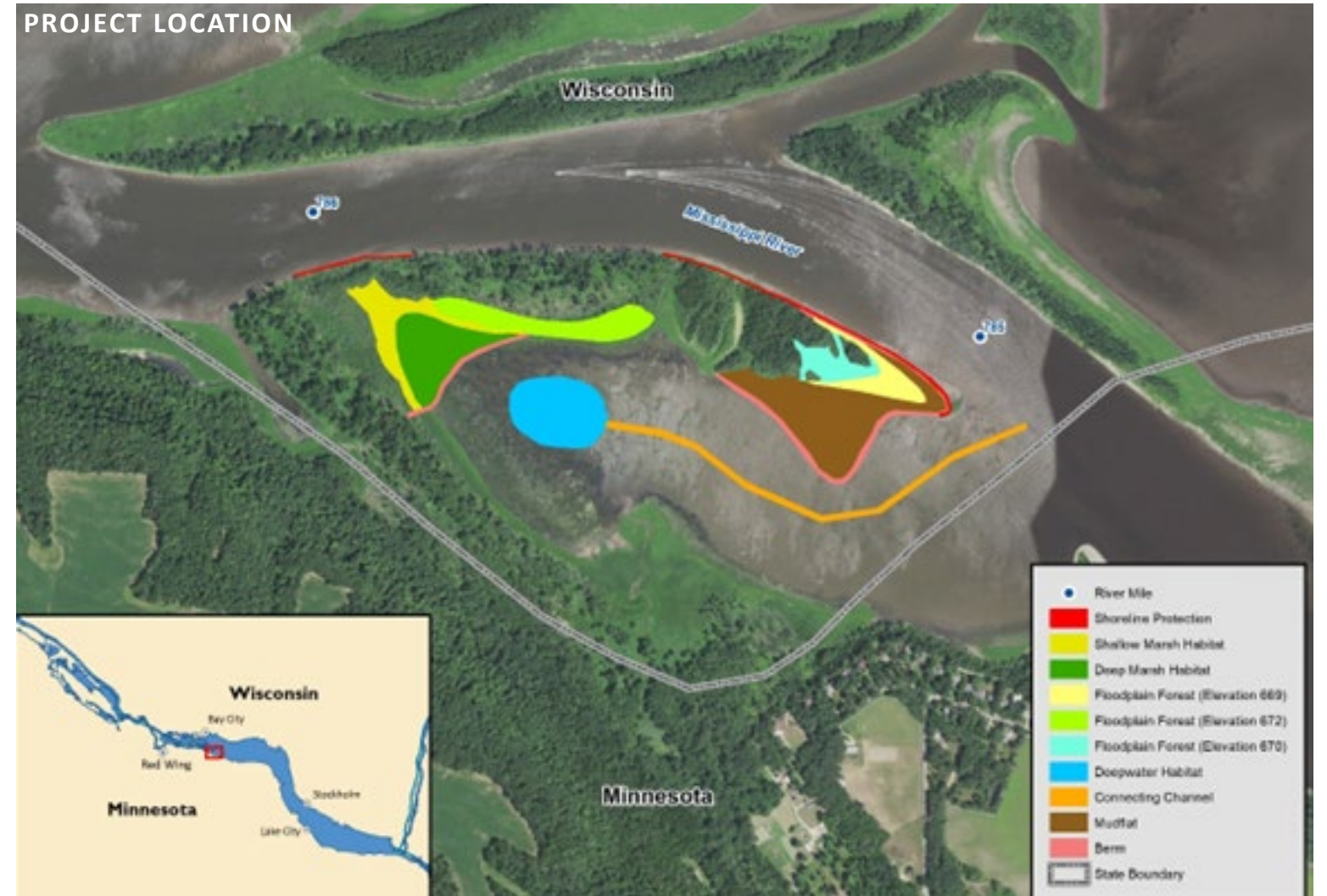
MEASURES

- Peninsula Building and Enhancement
- Forest Enhancement and Creations
- Backwater Restoration/Dredging
- Shoreline Protection
- Use of Dredged Material for Emergent Wetlands and Mudflats

ESTIMATED COST > \$10M

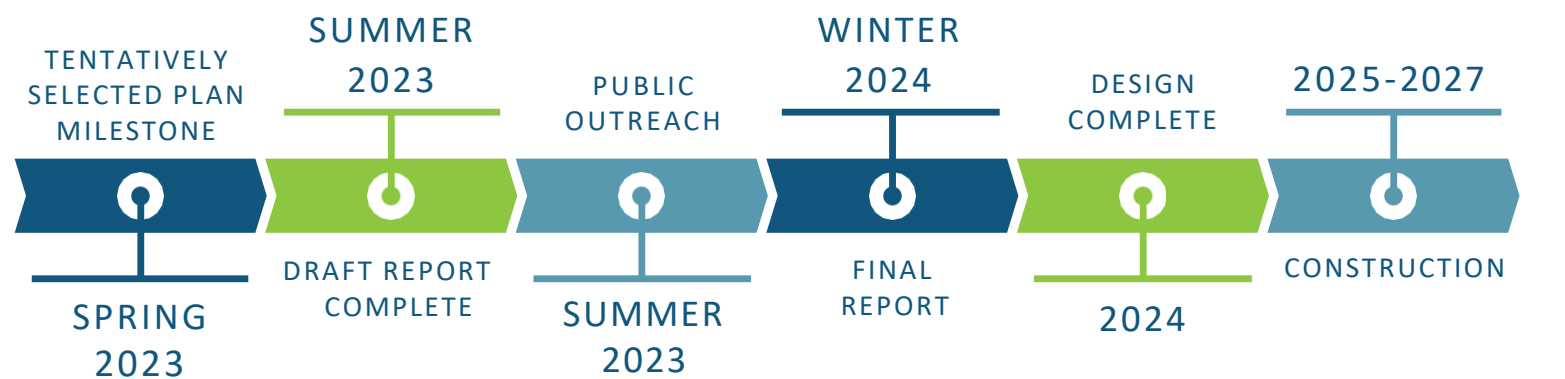


PROJECT LOCATION



Study Area Map and Project Features

PROJECT SCHEDULE



PROJECT STATUS

- Project Implementation Report to be completed in Feb 2024
- Design anticipated to be complete in 2024
- Construction Contract Award anticipated in 2024

PARTNERS

